

**READ BEFORE OPERATING**

**CONTROL  
ROOM**

***INSTRUCTION  
MANUAL FOR  
NEW ENGINEERS***

**WARNING 66,000V OUTPUT**



**BATTERSEA POWER STATION  
BRITISH ELECTRICAL AUTHORITY**

## POWERING BUCKINGHAM PALACE



It was a tale of two halves.

In 1929 The London Power Company broke earth and began building this colossal beacon of modernity.

Part one, Power Station A, started to generate electricity for London just seven years later.

Then, following a short pause during World War Two, building got back underway.

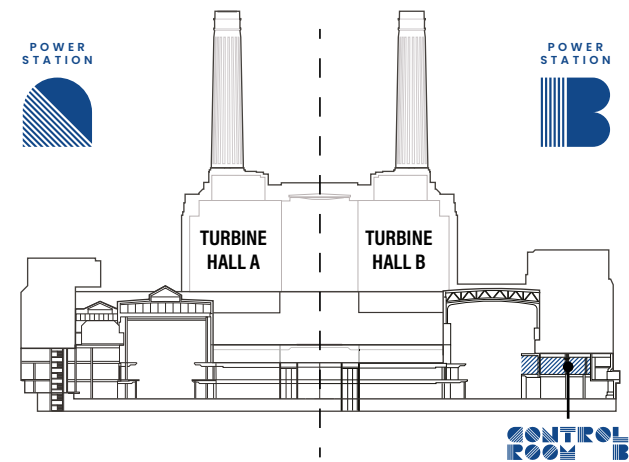
Today, 1955, the electrical supply has been nationalised and we, the British Electrical Authority welcome you, the very best and brightest engineers, to Control Room B.

Electricifying London with  
203 MEGAWATTS  
and keeping the lights on!

## POWERING THE HOUSES OF PARLIAMENT

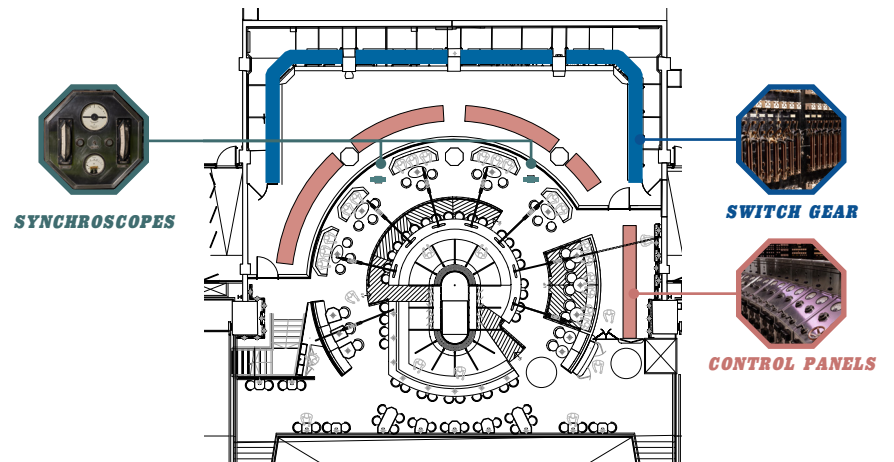
### LOCATION

ONE HUNDRED AND NINE METRES TALL



TALLER THAN ST. PAUL'S CATHEDRAL

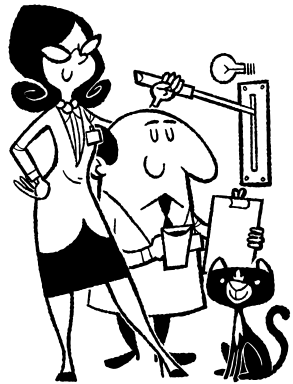
### EQUIPMENT



**OK TRAINEE ENGINEER! READY TO LEARN MORE ABOUT OUR EQUIPMENT AND THE HISTORY OF BATTERSEA POWER STATION? SCAN THIS CODE...**



**BEGIN  
ENERGISING  
PROTOCOL**



★ You have your clipboard ready? Good!  
Let's begin to turn up the voltage.



**COMING  
SOON!**

**COCKTAILS?**

NO

YES

**STYLE**

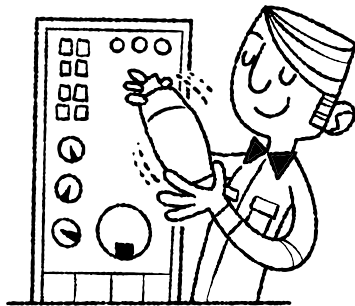
CLASSIC

ORIGINAL

**GROUP?**

SINGLE

YES



⚡ In case of emergencies -  
shake, pour and garnish.

**BATTERSEA POWER STATION**

**FRUITY / SWEET / DELICATE / £52** ⚡ for 3-4 engineers

Oxley gin, Evangelista Ratafia cherry liqueur, pomegranate juice and pineapple juice, fresh lime juice, sugar syrup, topped with Vaporetto Extra Seco spumante

Please make staff aware of any allergies and intolerances you might have. A full list of all allergens contained in each cocktail is available upon request.

**THE SYNCHROSCOPE**

**FRESH / LIGHT / DELICATE / £12.5**

Oxley gin, Essentiae lemon verbena liqueur, ginger & lemongrass cordial, pear purée, cloudy apple juice and fresh lime juice

**GAS WASH**

**TROPICAL / FRUITY / FRESH / £12**

Grey Goose L'Original vodka, bergamot liqueur, passion fruit purée, fresh lime juice and tropical fassionola syrup

**66,000 VOLTS**

**SOUR / SWEET / FRUITY / £12**

Bacardi Carta Blanca rum, Aperol aperitif, pineapple juice, raspberry syrup, fresh lime juice and egg white

**HIGH VOLTAGE**

**REFRESHING / LIGHT / GINGERY / £12**

Smirnoff Black No. 55 Small Batch vodka, Nardini Acqua di Cedro liqueur, Nonsuch bittersweet apple & cardamom shrub, fresh lime juice topped with Franklin & Sons original ginger ale

**BATTERY LICKER**

**ENERGISING / CREAMY / NUTTY / £12**

Bacardi Ocho rum, Disaronno liqueur, orgeat syrup and coffee

**RENEWABLE ENERGY**

★ **non-alcoholic**  
**REFRESHING / VIBRANT**  
**/ FRUITY / £9.5 / 41 kcal**

Martini Vibrante non-alcoholic aperitif, blueberry & blackcurrant cordial, fresh lime juice topped with Franklin & Sons pink grapefruit soda

**MORE?**

YES

All items include VAT. All items are subject to availability. A discretionary 12.5% service charge will be added to your bill.



**BURNING THE MIDNIGHT OIL**

RICH / HERBAL / AROMATIC / £13

Tanqueray gin, Martini Riserva Speciale Ambrato vermouth, Luxardo Bitter Bianco liqueur, Quaglia Pino Mugo liqueur, activated charcoal, topped with sparkling wine foam



**HEAT TREATED**

REFRESHING / CITRUSY / INVIGORATING / £13

Patron Silver tequila, Martini Riserva Speciale Bitter aperitif, chilli-infused hibiscus syrup, fresh lime juice, topped up with Franklin & Sons pink grapefruit soda



**THE SMOKE STACK**

RICH / SPICY / BITTERSWEET / £12.5

El Jimador Blanco tequila, Nixta corn liqueur, Ancho Reyes Verde chilli liqueur, agave syrup, smoked sea salt, citrus essence, Angostura Bitters and Peychaud's Bitters



**LIVE WIRE**

FIZZY / CHERRY / AROMATIC / £14

Hennessy V.S. cognac, Evangelista Ratafia cherry liqueur, fresh lime juice, sugar syrup, pomegranate juice, Angostura Bitters, topped with Moët & Chandon Impérial Blanc NV Champagne



**THE BATTERSEA NIGHTCAP**

WOODY / RICH / BOOZY / £13.5

Angel's Envy Bourbon whiskey, Martini Riserva Speciale Rubino vermouth, Mancino Chinato vermouth, Fernet Branca liqueur, coffee & chocolate cookie syrup



**EXISTENTIAL REBEL**

non-alcoholic  
FLORAL / REFRESHING / DELICATE / £9.5 / 38 kcal

Caleño Light & Zesty non-alcoholic spirit, lavender syrup and fresh lime juice

**CLASSIC COCKTAILS**

**APEROL SPRITZ £11**

Aperol aperitif and sparkling wine, topped up with Franklin & Sons 1886 soda water

**NEGRONI £12**

Bombay Sapphire gin, Campari aperitif, Martini Riserva Speciale Rubino vermouth

**ESPRESSO MARTINI £13**

Belvedere vodka, Tia Maria coffee liqueur, sugar, coffee

**OLD FASHIONED £12**

Woodford Reserve Bourbon whiskey, sugar and Angostura Bitters

**MARGARITA £12**

El Jimador Blanco tequila, Cointreau orange liqueur, sugar, lime



Avoid blackouts - ensure you are able to make clear read-outs at all times.

**CHAMPAGNE?**

NO

YES

	125ML GLASS	750ML BOTTLE
Moët & Chandon Impérial Blanc NV	£15	£82
Moët & Chandon Impérial Rosé NV	£18	£95
Moët & Chandon Grand Vintage Blanc		£120
Veuve Clicquot Yellow Label NV		£88
Dom Pérignon Vintage Blanc		£295
		1,500ML MAGNUM
Moët & Chandon Impérial Blanc NV		£195
Moët & Chandon Impérial Rosé NV		£220

WHY NOT?!

**SPARKLING?**

NO

YES

	125ML GLASS	750ML BOTTLE
Vaporetto Extra Seco Spumante	£9	£39.5
Chapel Down Brut NV		£55
Chapel Down Sparkling English Rose NV		£58

# WINE

YES

NO



## COLOUR

WHITE

RED

ORANGE ROSÉ

	175ML GLASS	750ML BOTTLE
<b>Trebbiano</b> , Poderi dal Nespole Le Coste, Emilia-Romagna, Italy	£7	£28
<b>Macabeo</b> , Bodegas Verde, Cariñena, Spain	£8	£32
<b>Sauvignon Blanc</b> , Spy Valley, Marlborough, New Zealand	£10	£40
<b>Riesling</b> , Charles Smith Kung Fu Girl, Washington, USA		£45
<b>Cortese</b> , Morgassi Superiore Tuffo Gavi del Comune di Gavi, Piemonte, Italy		£50
<b>Chardonnay</b> , Chablis Domaine Gilbert Picq & ses Fils, Burgundy, France		£58

	175ML GLASS	750ML BOTTLE
<b>Sangiovese</b> , Poderi dal Nespole Fico Grande, Emilia-Romagna, Italy	£7	£28
<b>Tempranillo</b> , Castillo Clavijo Crianza, Rioja, Spain	£8	£32
<b>Shiraz</b> , Journey's End Huntsman, Stellenbosch, South Africa	£9	£36
<b>Malbec</b> , Catena Appellation Vista Flores, Mendoza, Argentina		£40
<b>Cabernet Sauvignon</b> , Xanadu Estate, Margaret River, Australia		£52
<b>Pinot Noir</b> , Gerard Bertrand Domaine de L'Aigle, Occitane, France		£65

	175ML GLASS	750ML BOTTLE
<b>Grenache blend</b> , Côte Rosé VDP, Côtes Catalanes Domaine Lafage, France	£8	£32
<b>Grenache</b> , Château d'Esclans, Whispering Angel, Côtes de Provence, France		£55

	175ML GLASS	750ML BOTTLE
<b>Chardonnay Blend</b> , Gerard Bertrand Orange Gold, France		£60

**⚡ Fingers on buzzers, which bands had an album covers featuring Control Room B?**



# BEER?

NO

YES

LAGER

TYPE?

ALE



- FIVE GRAIN LAGER** 330ml **£6**
- SINGHA THAI LAGER** 330ml **£6.3**
- DAYS LAGER 0.0%** 330ml 73 kcal **£5.9**

- WHITSTABLE BAY PALE ALE** 500ml **£6.5**
- SHEPHERD NEAME IPA** 500ml **£6.8**
- DAYS PALE ALE 0.0%** 330ml 69 kcal **£5.9**

- ORCHARD VIEW CIDER** 500ml **£6.5**
- OLD MOUT STRAWBERRY & APPLE** 500ml **£6.5**

**★ Did you know... the architect of Battersea Power Station, Sir Giles Gilbert Scott, also designed the famous red telephone box!**



# CIDER?

NO

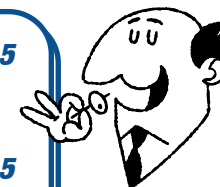
YES


# PECKISH?

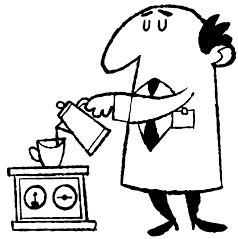
NO → **IT'S MIDDAY - WHERE'S THE COFFEE?**

YES

- NOCELLARA DEL BELICE OLIVES** VG 241 kcal **£6.5**
- ROSEMARY MIXED NUTS** VG 601 kcal **£6**
- FETA-STUFFED PEPPERS** V 323 kcal **£6.5**
- SWEET CHILLI & HERB CHARGRILLED MUSHROOMS** VG 429 kcal **£6.5**
- BALSAMIC BORETTANE ONIONS** VG 96 kcal **£6.5**



 Our control panels have to be crewed around the clock to avoid blackouts. Best have a double espresso!



<b>ESPRESSO</b>	<b>£3.3</b>
<b>MACCHIATO</b>	<b>£3</b>
<b>DOUBLE ESPRESSO</b>	<b>£3.5</b>
<b>MACCHIATO</b>	<b>£3.5</b>
<b>AMERICANO</b>	<b>£3.8</b>
<b>CAPPUCCINO</b>	<b>£3.8</b>
<b>LATTE</b>	<b>£3.8</b>
<b>FLAT WHITE</b>	<b>£3.8</b>
<b>HOT CHOCOLATE</b>	<b>£3.8</b>
<b>EARL GREY TEA</b>	<b>£3.8</b>
<b>BREAKFAST TEA</b>	<b>£3.8</b>
<b>FRESH MINT TEA</b>	<b>£3.8</b>



HOT



NO

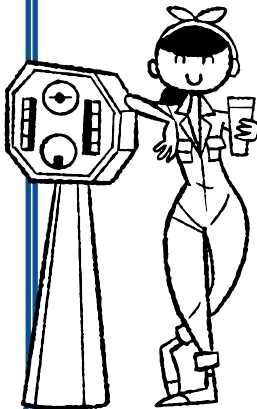
**PASTRIES!**

Check the counter for today's selection



COLD

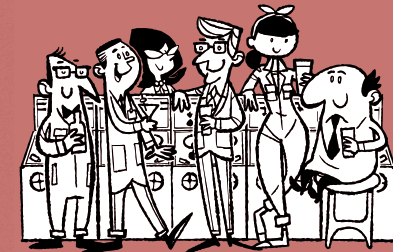
<b>FRESH ORANGE JUICE</b> 155 kcal	<b>£5</b>
<b>FRESH APPLE JUICE</b> 110 kcal	<b>£5</b>
<b>COCA-COLA</b> 139 kcal	<b>£4.5</b>
<b>DIET COKE</b> 1 kcal	<b>£4.5</b>
<b>COKE ZERO</b> 0 kcal	<b>£4.5</b>
<b>NATURAL INDIAN TONIC</b> 68 kcal	<b>£4.5</b>
<b>NATURAL LIGHT TONIC</b> 44 kcal	<b>£4.5</b>
<b>1886 SODA WATER</b> 0 kcal	<b>£4.5</b>
<b>PINK GRAPEFRUIT SODA</b> 22 kcal	<b>£4.5</b>
<b>BREWED GINGER BEER</b> 92 kcal	<b>£4.5</b>
<b>ORIGINAL GINGER ALE</b> 66 kcal	<b>£4.5</b>
<b>ORIGINAL LEMONADE</b> 86 kcal	<b>£4.5</b>



## VENUE HIRE

Control Room B provides an unrivalled setting for private parties from 50 to 180 guests. Patrons will have the chance to get an up-close view of the Control Room's original dials, control desks and switchgear racks that have been restored to their former glory.

[events@controlroomb.com](mailto:events@controlroomb.com)



## KEEP UP WITH THE ENGINEERS

Follow us on Instagram

[@controlroomb](https://www.instagram.com/controlroomb)



CONTROL  
ROOM

1955 ©